



# Recommendations, *your need-to-know guide*



**BALADES  
iNSPIRÉES**  
Péronne Haute Somme Tourisme

# RECOMMENDED MÉMOIRALS

Discover a rich heritage marked by the international history of the First World War: plunge into the heart of these poignant stories and discover a heritage full of emotions and personal accounts of the time.

## MUSEUM OF THE GREAT WAR AT PÉRONNE

Housed in the medieval castle, the Historial de la Grande Guerre, as it is called in French, is a trilingual museum which explains the history of the First World War, its origins and its consequences from the perspectives of France, Germany and Great Britain. This museum also shows everyday life at the front and behind the lines.

At the entrance to the Château, exhibits in three rooms explain the history of the Château and the town, as well as the liberation of Péronne by the Australians in September 1918 following the Battle of Mont Saint Quentin.

→ *Open every day (except Monday) from October to March from 9.30 am to 5 pm, and every day from April to September from 9.30 am to 6 pm*

*Château de Péronne, Place André Audinot - Tel.: +33 (0)3 22 83 14 18 - [www.historial.fr](http://www.historial.fr)*



## THE CHAPELLE DU SOUVENIR FRANÇAIS AT RANCOURT

The largest French military cemetery in the Somme département is the final resting place of 8,566 soldiers.

A chapel was erected by the Du Bos family in memory of their sons and their comrades killed on 25 September 1916.

The chapel also houses an interpretation centre on religions in the Great War.

→ *Open from 1 February to 30 November, Wednesday to Sunday, from 9.30 am to 12 noon and 2 pm to 6 pm, 2, Route Nationale - Tel.: +33 (0)3 22 85 04 47*





### **THE SOUTH AFRICAN NATIONAL MEMORIAL AND MUSEUM AT LONGUEVAL**

Built in the heart of Delville Wood, called Devil's Wood by some, the South African memorial at Longueval recounts and commemorates South Africa's involvement in the First and Second World Wars, as well as the Korean War. This makes it a unique site.

Originally built in 1926, the Memorial faces the military cemetery where 5,523 soldiers are buried, 3,593 of whom are unidentified. These soldiers fought for 6 days and 6 nights under appalling conditions. At the inauguration of the Memorial in 1926, Delville Wood itself was also consecrated.

The Museum opened its doors on 11 November 1986, providing visitors the opportunity to learn more about South Africa's involvement in the major conflicts of the 20<sup>th</sup> century.

→ *The Museum is open from February to early December from 10 am to 4 pm, and from 1 April to 14 October from 10 am to 5.30 pm - Closed on Mondays.*  
*5, Rue de l'Afrique du Sud -*  
*Tel.: +33 (0)3 22 85 02 17*

### **ALONG THE MEMORIAL CIRCUIT**

Starting at the Museum of the Great War in Péronne, follow the poppy signs that guide you along the Remembrance Trail. After Rancourt and Longueval, continue on towards Albert to discover some of the most important places of remembrance of the First World War: the La Boisselle mine crater, testimony to the explosion of the tunnels dug by the sappers that marked the start of the Battle of the Somme on 1 July 1916, the Franco-British Thiepval Memorial on which the names of more than 73,000 missing soldiers are engraved, and the Beaumont-Hamel Newfoundland Memorial, where you can see the preserved trench lines of the Somme battlefield.

### **BRIGHT IDEA**

*Take the "Remembering 14-18" guidebook at the tourist office*



# RECOMMENDED HISTORY

The history of Péronne dates back to the Middle Ages. The Péronne Haute Somme region has been shaped by events that have taken place here over the centuries. Discover its history!

## PÉRONNE

Did you know that from Clovis to Charles X, many kings of France have passed through Péronne? From the history of the Château de Péronne to that of Ham, discover a region steeped in French history that beckons you to explore its small towns and villages, each with their distinctive heritage.

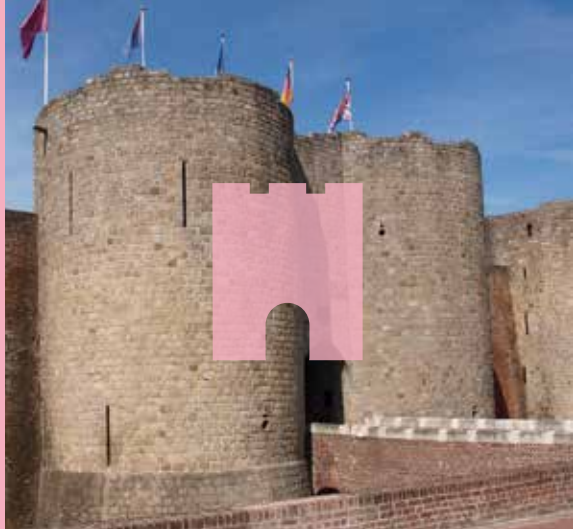
On three themed walks, visit the town of Péronne, a blend of history and nature: the Château, Fort Caraby, the town hall, the Porte de Bretagne, the Church of Saint-Jean-Baptiste, and more.

## HAM

Since its construction in the 13<sup>th</sup> century, both the architecture and the use of Ham Castle have changed. It was turned into a state prison in the 18<sup>th</sup> century. This is the castle from which Louis Napoléon Bonaparte, the future Napoléon III, escaped in 1846.

Destroyed in 1917 at the time of the German retreat, the remains of the castle are now brought to life throughout the year by an association, the Friends of the Château.

Take a stroll through the town and discover the church, which used to be part of an abbey, and Delicourt Park.



## ARCHITECTURAL RECONSTRUCTION

The Great War gave rise to a remarkable period of reconstruction with a desire for renewal and modernity and the use of characteristic materials to reflect these concepts. Combinations of brick, concrete and mosaics, make for a distinctive architectural style, Art Deco, brought into sharper focus by a region which has been recognized as a *Ville et Pays d'Art et d'Histoire* with the VPAH label.

Thanks to the programme of visits and events organised throughout the year by the Mission Pays d'Art et d'Histoire Santerre Haute Somme, you can enjoy this amazing heritage!

## BRIGHT IDEA

*City maps of Péronne and Ham on the Haute Somme tourist map*

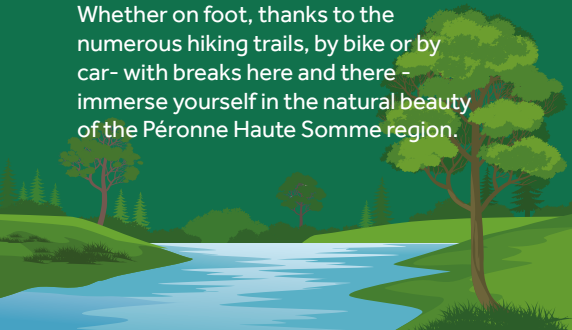


# RECOMMENDED OUTDOOR ACTIVITIES

The Valley of the Somme offers a wealth of landscapes just waiting to be explored. Wander around and take in the sights, and soak in everything that the Valley of the Somme has to offer!

## VIEWPOINTS

From the viewpoints at Vaux and Frise, you can take in the unique scenery as the River Somme winds through the valley, carving out its slow, meandering course as it flows into the Baie de Somme. Whether on foot, thanks to the numerous hiking trails, by bike or by car - with breaks here and there - immerse yourself in the natural beauty of the Péronne Haute Somme region.



## THE PROTECTED NATURAL RESERVE OF THE CLÉRY-SUR-SOMME POND

At Cléry-sur-Somme you can admire the magnificent natural landscapes of the Somme ponds.

The unique flora and fauna all along the Bird Trail can also be observed from a hide close to the ponds, where you will find explanatory information boards.

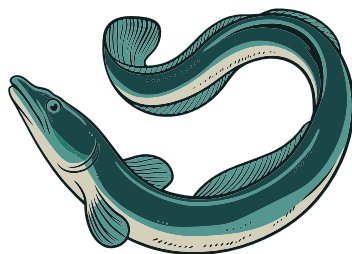
## EEL LADDERS

Eel ladders, an ingenious method of trapping eels, are a feature of the Haute Somme.

Look out for them in several communes in the area. The Eclusier-Vaux eel ladder in particular is not to be missed.

## BRIGHT IDEA

*The Haute Somme tourist map*



# RECOMMENDED RECREATION

On land, in the air or on water, have fun discovering the Péronne Haute Somme region in a whole new way!

## LE P'TIT TRAIN DE LA HAUTE SOMME AT LA NEUVILLE-LÈS-BRAY

Climb aboard the P'tit Train de la Haute Somme and let yourself be carried through the countryside and the Santerre Plateau. From the hamlet of Froissy, it is an hour's ride along a narrow-gauge track used during the First World War to Dompierre-Becquincourt, from where you can see in the distance the buildings of the old sugar refinery, now occupied by the Les 130 wine cellars.

→ 58 route de Roye - Tél : +33 (0)3 22 76 14 60 - [petittrainhautesomme.fr](http://petittrainhautesomme.fr)

## AU FIL DU CAM AT PÉRONNE

The *Au Fil du Cam* leisure park in Péronne will create happy memories for young and old alike. In a bucolic setting around the Cam Pond, there are several accrobranching courses of different degrees of difficulty, allowing you to swing through the trees and over the pond.

You can also enjoy mini-golf or take a trip in a canoe or pedal boat to add fun to your Péronne experience.

→ Boulevard du fort Caraby - Tél : +33 (0)3 66 58 01 71 - [aufilducam.fr](http://aufilducam.fr)



## THE 30 CYCLE ROUTE

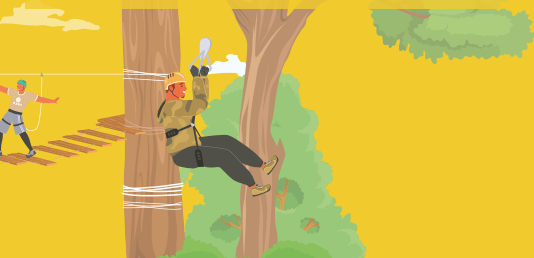
The towpath along the Somme, which covers 160 km from Ham to Saint-Valery-sur-Somme, is perfect for cycling at your own pace and discovering the natural riches of the Vallée de Somme. Divided into seven sections of 20 to 30 km each as far as the Baie de Somme, take the «Somme Valley by bike» leaflets with you to find out all you need to know about the route: places to visit, accommodation, and other practical information.

→ **BRIGHT IDEA**  
*Mobile App « Somme en poche »*

## BICYCLE HIRE

At the Péronne Haute Somme Tourist Office, you can hire a hybrid e-bike (VTC) or a mountain bike (VTT). For half a day, a full day or even several days, visit the region in a refreshingly different way.

→ *You can also take advantage of bike-friendly facilities with the Accueil Vélo label to make sure you get the right welcome for your favourite pastime!*



# RECOMMENDED FOOD & DRINK

Taste, savour and enjoy  
the local flavours!

## THE LES 130 WINE CELLARS AT DOMPIERRE-BECQUINCOURT

Out of their shared passion for fine wine, local producers have banded together at this wine cellar to offer Chardonnay vintages that even grace the tables of the French Senate!

In the former sugar refinery of Dompierre-Becquincourt, visit the *Les 130* wine cellars

→ Shop open Monday to Friday from 3.30 pm to 5.30 pm – Tours Monday to Friday from 2 pm to 3.30 pm (tour starts at 2.15 pm) 28 rue de Chuignes - Tél: +33 (0)7 70 22 24 25

## BRASSERIE DE CLERCK BREWERY AT PÉRONNE

Since 1774, the De Clerck family of brewers, originally from Flanders but based in Péronne since 1926, has developed a whole range of beers over the years, the best known of which is Colvert.

→ Shop open Mondays from 2.30 pm to 4.30 p.m., and Tuesdays, Thursdays and Fridays from 10 am to 12 noon and from 2.30 pm to 4.30 pm, 42 rue Georges Clémenceau - Tél: +33 (0)3 22 84 30 94



## LES CANARDS DE LA GERMAINE AT SANCOURT

Ducks take centre stage at Sancourt. Discover the products of the farm: pâtés, foie gras. Take the opportunity to visit the farm too!

→ Shop open Monday to Saturday, 9.30 am to 12 noon and 2.30 pm to 7 pm  
3 rue de l'église - Tél: +33 (0)3 23 81 01 57

## LE VIVIER D'OMIGNON AT SAINT-CHRIST-BRIOT

Enjoy trout and eel at *Le Vivier d'Omignon!* Smoked or in a terrine, eel is a speciality of the Haute Somme, trapped in its famous eel ladders.

→ Restaurant and shop open every day except Tuesday, 28 rue de l'église - Tél: +33 (0)3 22 84 13 05

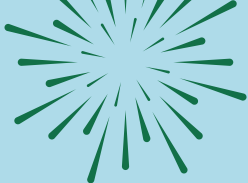
## POTEL FARM AND ITS ROLLOT CHEESE AT MARCHÉLEPOT

Discover this heart-shaped cheese from Picardy, similar to Maroilles, with just as much character.

→ Farm shop open Monday to Saturday, 9 am to 12 noon, 10 rue de l'église - Tél: +33 (0)3 22 83 94 07

## BRIGHT IDEA

You can find these products in the  
Tourist Office shop in Péronne.



# HIGHLIGHTS



## ART DECO SPRING FESTIVAL

This event is organised every year in April and May throughout the Hauts-de-France region, with more than 20 partners coming together to offer events, tours and exhibitions based on a common architectural theme: Art Deco, a heritage that came from the years following the First World War.

## FESTIVE HIKING TRAILS

On the last Sunday of every June, the Péronne Haute Somme Tourist Office organises a day out for nature lovers and walkers. Hiking, exploring, conviviality and gourmet products are the key words of these days spent on the trail in the Péronne Haute Somme region.

## A DANCE THROUGH TIME

Discovering the history of the city of Péronne through sound and light, the *Cygnes des Temps* nocturnal live show brings together 300 volunteer actors and 1,600 costumes for 3 evenings in Péronne on the last weekend every June. The show takes place in the exceptional natural setting of the Porte de Bretagne.

## HERITAGE DAYS LAUNCH EVENING

To promote the heritage of small towns during the European Heritage Days programme, the Péronne Haute Somme Tourist Office and the *Mission Pays d'art et d'histoire Santerre Haute Somme* organise a launch evening to kick off this weekend of discovery and entertainment. The programme includes visits, concerts and shows!

## LA MÉDIÉVALE FESTIVAL AT HAM CASTLE

In September, find out how the Friends of the Castle and the History of Ham and its surrounding area maintain and enhance the ruins of the castle. Visits, events and stalls give visitors the chance to experience the atmosphere of medieval times.

## BRIGHT IDEA

Highlights at

[www.hautesomme-tourisme.com](http://www.hautesomme-tourisme.com)

## PÉRONNE HAUTE SOMME TOURIST OFFICE

1 rue Louis XI - 80200 Péronne  
T. +33 (0)3 22 84 42 38

[www.hautesomme-tourisme.com](http://www.hautesomme-tourisme.com)

→ Open in June and September from Monday to Saturday, 9 am to 12 noon and 2 pm to 6 pm, on Sundays from 9 am to 12.30 pm (in July and August), and from October to May, opening hours are Monday to Saturday, 9 am to 12 noon and from 2 pm to 5.30 pm (5 pm on Saturdays).

Copyright : Association Mac Orlan, Bestjobbers, Max Coquard, Jérôme Halâtre, L.Desbois Lwood, Nicolas Bryant, OTPéronneHauteSomme, SommeTourisme, Vergoz Tommasini



karigraphie.fr - 06 12 34 77 16 - June 2025



Cofinancé par l'Union européenne